

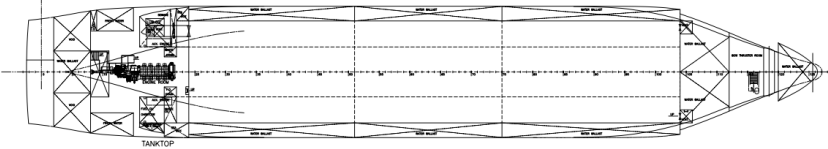
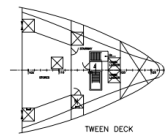
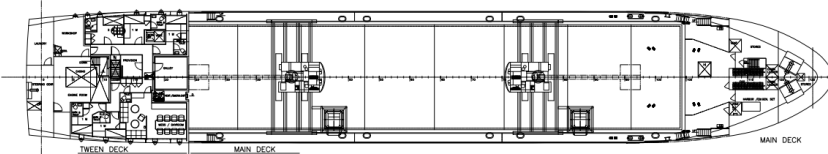
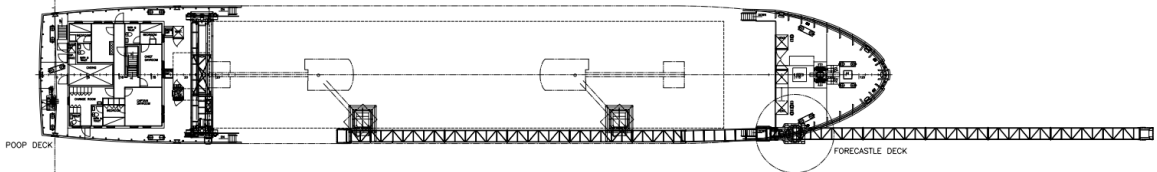
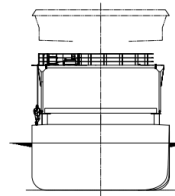
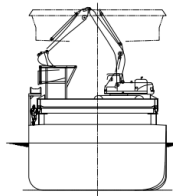
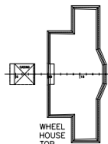
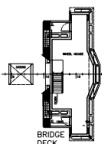
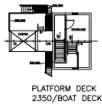
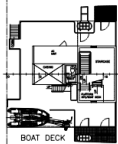
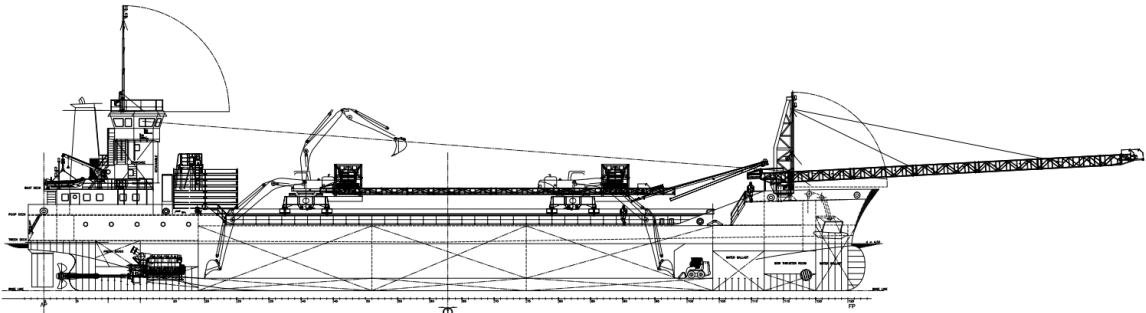


Seaworks AS  
 PO Box 3196  
 9498 HARSTAD

Tel: +47 77 00 05 50  
 E-post: [post@seaworks.no](mailto:post@seaworks.no)

<b>IMO NO</b>	<b>9390393</b>
<b>Call Sign</b>	LFFH
<b>Flag/Homeport</b>	Norway/Harstad
<b>Year Built</b>	2010
<b>Type</b>	General Cargo
<b>MMSI</b>	257301000
<b>Classification</b>	DNVGL
<b>DWCC S/W</b>	2600/2500
<b>CBFT G/B</b>	105900cbft / 3000m3
<b>GT/NT</b>	2010/1025
<b>LOA</b>	81,36
<b>Beam, breadth extreme</b>	13,15
<b>Draft fully laden S/W</b>	4,74/4,64
<b>Hatch dimensions</b>	50 x 10,40
<b>Hold dimensions</b>	49,2 x 10,2 x 7,06
<b>Conveyor length over bow</b>	24 m
<b>Owners</b>	Seaworks AS
<b>Operators</b>	Seaworks AS
<b>P&amp;I</b>	Alandia
<b>Main engine</b>	MAN B & W 8L21/31 1720 kw
<b>Cargo gir</b>	Geared/conveyor belt
<b>Boxed</b>	Yes
<b>Bow Thruster</b>	200 kw
<b>Phone</b>	+47 951 62 781
<b>E-mail</b>	<a href="mailto:Geir-tore.h@seaworks.no">Geir-tore.h@seaworks.no</a>
<b>Inmarsat</b>	





**PRINCIPAL DIMENSIONS:**

LENGTH OVER ALL	81.256 m
LENGTH BETWEEN P-P	72.200 m
BREADTH BCD	15.120 m
DEPTH BCD	8.200 m
FRAME SPACING	0.610 m
CRUISING SPEED	4.200 m
DISPLACEMENT	3000 T
DEADWEIGHT AT DESIGN DRAUGHT	2050 T
DEADWEIGHT AT SEAWING DRAUGHT	2900 T
HOLD CAPACITY	approx. 3000 M3
CORNERERS	48 TCU
HOLD	110 TCU
DECK	110 TCU
MEETER PILES	48 pcs
STOWING LOAD on TANKTOP	61 T or 20'
STOWING LOAD on HATCH	28 T or 20'

CLASS: GL 100 A 5 ICE E1, MC E AUT 16h

CLASS	GL 100 A 5 ICE E1, MC E AUT 16h
DESIGN	SEAWORKS GER TONNE 11 - UFFH
YEAR	GENERAL ARRANGEMENT
SCALE	1:150
PROJECT NO.	17126
DATE	014161
SCALE	1/1
SCALE	A
SCALE	SCALE

